

ZyAIR B-400 11Mbps Wireless LAN Ethernet Adapter



Quick Installation Guide

ZyAIR B-400 Quick Installation Guide

FCC Warning

The ZyAIR B-400 has been tested and found to comply with the limits for a Class B digital device, pursuant to part 15 of the FCC Rules. These limits are designed to provide reasonable protection against harmful interference in a residential installation. This equipment generates, uses and can radiate radio frequency energy and, if not installed and used in accordance with the instructions, may cause harmful interference to radio communications. However, there is no guarantee that interference will not occur in a particular installation. If this equipment does cause harmful interference to radio or television reception, which can be determined by turning the equipment off and on, the user is encouraged to try to correct the interference by one or more of the following measures:

- Reorient or relocate the receiving antenna.
- Increase the separation between the equipment and receiver.
- Connect the equipment into an outlet on a circuit different from that to which the receiver is connected.
- Consult the dealer or an experienced radio/TV technician for help.

You are cautioned that changes or modifications not expressly approved by the party responsible for compliance could void your authority to operate the equipment.

FCC Radiation Exposure Statement

The ZyAIR B-400 complies with FCC radiation exposure limits set forth for an uncontrolled environment. This equipment should be installed and operated with minimum distance 20cm between the radiator & your body. This equipment must not be co-located or operating in conjunction with any other antenna or transmitter.

CE Marking Warning

This is a Class B product. In a domestic environment this product may cause radio interference in which case the user may be required to take adequate measures.

Table of Contents

***ZYAIR B-400 FEATURES* 4**

***PACKAGE CONTENTS* 5**

***PHYSICAL DETAILS* 6**

***HARDWARE INSTALLATION* 8**

***WIRELESS NAVIGATOR INSTALLATION* 9**

***STARTUP AND LOGIN* 13**

***FAQ AND TROUBLESHOOTING*..... 16**

ZyAIR B-400 Features

LAN Features

- **DHCP Support** – Enable the adapter to act as a DHCP client to receive an IP address from a DHCP Server in the wired Ethernet LAN
- **Built-in 10BaseT LAN Port** – Designed to connect the adapter with any Ethernet-ready device, such as a desktop PC, print server and network printer/scanner.

Wireless Features

- **Standard Compliant** – The adapter complies with the IEEE802.11b standard, and it is interoperable with IEEE802.11b-Compliant Equipment
- **High speed Wireless Connection** – Supports up to 11Mbps wireless data rate
- **Data Rate Auto Fall-Back** - Provides 11, 5.5, 2 and 1Mbps wireless data rates. Shifts dynamically to guarantee the availability and reliability of wireless connections.
- **Roaming** – Provides seamless roaming within the IEEE802.11b wireless LAN infrastructure

Configuration & Management

- **Easy to Setup** - With the Windows-based Wireless Navigator Utility, users can easily setup the IP address of the adapter, and upgrade the firmware.
- **Easy to Manage** – The adapter can be easily configured using any WEB browser from anywhere on the wired or wireless LAN.

Security

- **Configuring Protection** – Provides password protection to prevent unauthorized users from changing the configuration.
- **Wireless LAN Security** - Provides 64-bit & 128-bit Wired Equivalent Privacy (WEP) encryption to protect the wireless data transmissions.

ZyAIR B-400 Quick Installation Guide

Package Contents

- ✓ One ZyAIR B-400 11Mbps Wireless LAN Ethernet adapter
- ✓ One installation CD-ROM (Wireless Navigator Utility & User's Manual Included)
- ✓ One power adapter
- ✓ One quick installation guide

If any of the above items are damaged or missing, please contact your dealer immediately.

ZyAIR B-400 Quick Installation Guide

Physical Details

Rear Panel



INIT Button

“INIT” means “Initialize”. Pressing the button will reboot the device and restore the settings to the factory default settings.

LAN Cable Selection Switch

X: Crossover: the RJ-45 port Tx and Rx lines are reversed. Use this setting when using a straight cable connected to a PC or other Ethernet device. It is also the factory default setting.

II: Straight: Straight: the RJ-45 port Tx and Rx lines are normal. Use this setting when using a straight cable connected to an Ethernet device, such as an Ethernet hub/switch.

ZyAIR B-400 Quick Installation Guide

LAN Connection Use a standard straight, UTP Ethernet cable (RJ-45 connector) to attach the PC, hub/switch or broadband router/modem to this port.

Power Input Only use the power adapter supplied with the adapter

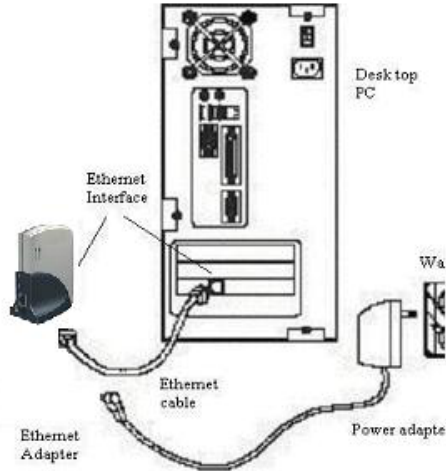
LED Indications

LED	Color	Status	Description
Ethernet	Green	ON	The LAN port is linked.
		OFF	The LAN port is not linked with any Ethernet device.
		Blinking	The LAN port is sending or receiving data.
Wireless	Green	ON	The B-400 is linked with a wireless LAN device.
		OFF	No data is forwarding between the wireless LAN and wired LAN ports.
		Blinking	Sending or receiving wireless data.

ZyAIR B-400 Quick Installation Guide

Hardware Installation

The following illustration is an example showing how to install the B-400 adapter with a PC. Be sure to use the supplied power adapter.



Note!



The B-400 may also be connected to other Ethernet-ready devices, such as print servers.

ZyAIR B-400 Quick Installation Guide

Wireless Navigator Installation

The Wireless Navigator Utility is provided to allow users to easily configure the B-400 adapter using any Windows-based PC. This section describes procedures for installing the Wireless Navigator Utility onto the PC.

Note!



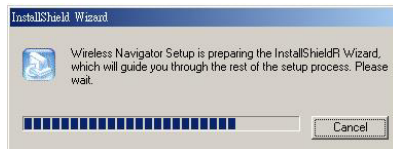
Please make sure that the PC already has the TCP/IP protocol installed. If not, please consult the Windows help file for assistance with setting up TCP/IP on the PC.

Note!



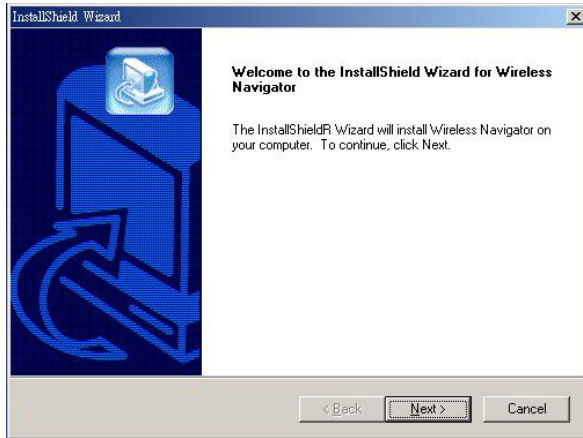
If the B-400 adapter is used with a non-PC Ethernet device such as a print server or game console, users can still install the Wireless Navigator in any PC located in the same IP subnet with the B-400. The utility can locate the B-400 via both wired and wireless Ethernet connections for remote management.

Step 1: Insert the installation CD-ROM into the CD-ROM drive. Run the SETUP.EXE program on the CD-ROM. The following window will be shown automatically.

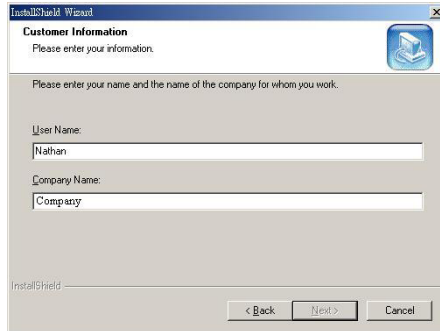


ZyAIR B-400 Quick Installation Guide

Step 2: After the InstallShield Wizard preparation is finished, the following window will be shown. **Click the Next** button to continue.

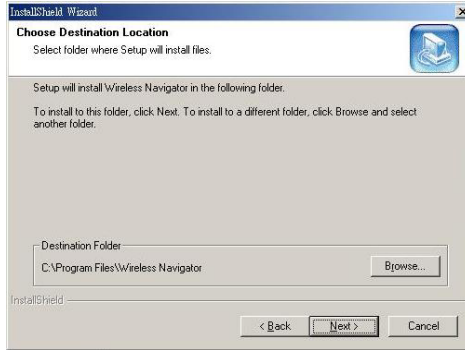


Step 3: Type in the User Name and Company Name, and click the **Next** button to continue.



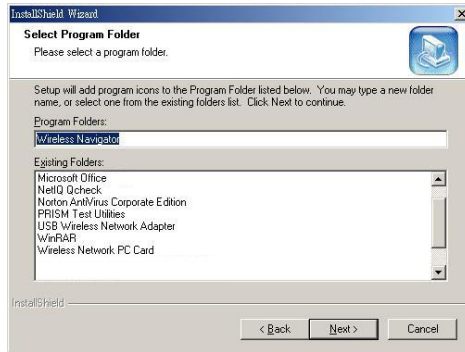
ZyAIR B-400 Quick Installation Guide

Step 4: The screen will show the default destination chosen by the utility. To install the Wireless Navigator in another location, click the **Browse** button and select an alternate destination. Click the **Next** button when ready to continue. The setup program will then begin to install the programs into the destination folder.

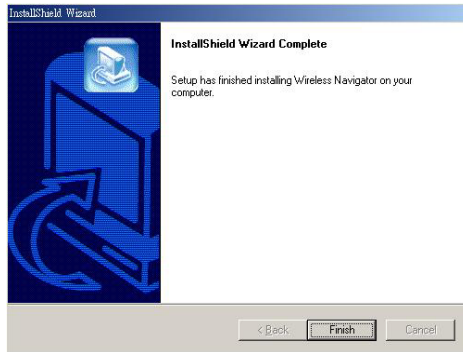


Step 5: The screen will show the Program Folder that the utility will use. Users may type a name to create a new program folder, or select one from the existing folder list. Then, click the **Next** button to continue.

ZyAIR B-400 Quick Installation Guide



Step 6: The Wireless Navigator has been installed now, and then click the **Finish** button to to complete the installation.



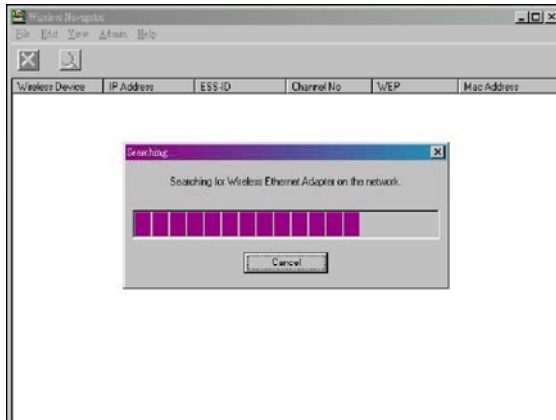
To remove the Wireless Navigator, click the **Start** button, and select **Programs, Wireless Navigator, and Uninstall**, and then follow the instructions on the screen.

ZyAIR B-400 Quick Installation Guide

Startup and Login to the B-400

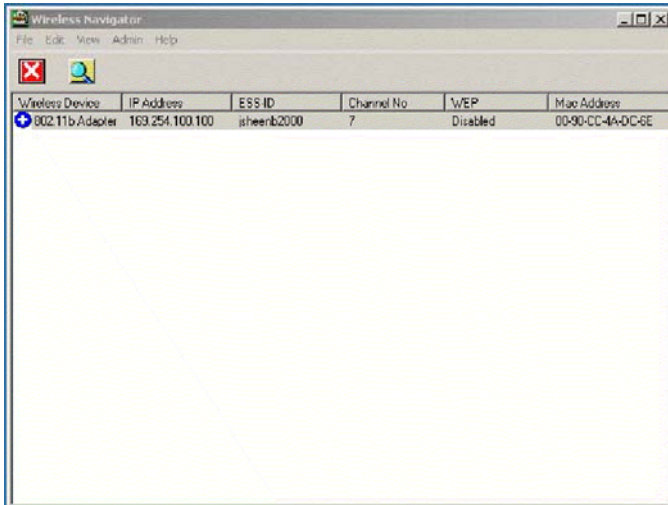
Follow the procedures below to startup the Wireless Navigator and locate the B-400 Ethernet adapter.

1. Refer to "**Wireless Navigator Installation**" to install the Wireless Navigator.
2. Click **Start** and select **Programs, Wireless Navigator** and then **Wireless Navigator**. Or, just double-click the **Wireless Navigator** icon on the desktop screen.
3. The Wireless Navigator starts up, and searches for adapters located on the wired and wireless LAN.



ZyAIR B-400 Quick Installation Guide

4. The utility will show the B-400 adapter connected to the PC. Please change the adapter IP address, and check that the computer IP address and the adapter IP address are on the same subnet. (From Admin/set IP address)



The screenshot shows a window titled "Wireless Navigator" with a menu bar (File, Edit, View, Admin, Help) and a toolbar with a red 'X' and a magnifying glass. Below the toolbar is a table with the following data:

Wireless Device	IP Address	ESS ID	Channel No	WEP	Mac Address
+ 802.11b Adapter	163.254.100.100	isheerb2000	7	Disabled	00-90-CC-4A-0C-5E

Note!



If the B-400 adapter is not shown in the list, please make sure all the cables are well connected.

ZyAIR B-400 Quick Installation Guide

5. Double-click on the adapter to access its built-in web server. The below screen will show. Click the **OK** button. (The default user name is “admin” and the default password is “1234”).



Enter Network Password

Please type your user name and password.

Site: 192.168.1.11

Realm: 802.11b Bridge

User Name: admin

Password: ****

Save this password in your password list

OK Cancel

6. The below screen will then appear. The B-400's built-in web server has been successfully entered, and the user can configure the B-400.



Info Wireless Server Admin Help

INFO

Information about the Adapter.

NOTE: You may have to re-load this page to see the current settings.

SSID:	Wireless
Channel:	1
BSSID:	00:A0:C5:4F:FE:C4
Transmission Rate:	11
Link Quality (dB):	96
MAC address:	00:A0:C5:40:9B:D6
IP Address:	192.168.1.11
Firmware Revision:	1.1.0

Results of the most recent scan

SSID	MAC address	Channel	Signal strength (%)	Mode
Wireless	00:A0:C5:4F:FE:C4	1	100	Info

7. For details of how to configure the B-400 adapter, please refer to the User's Manual supplied in the CD.

FAQ and Troubleshooting

This chapter provides solutions to problems usually encountered during the installation and operation of the B-400. Please refer to the following descriptions, and for further assistance, please contact the dealer.

**Q: My PC can't locate the Wireless Ethernet adapter.
How do I solve the problem?**

A: Please follow the procedures below:

- Check if the Ethernet cable is well connected.
- Check if the IP addresses of the PC and B-400 Wireless Ethernet adapter both are on the same IP network. If not, the Wireless Navigator can be used to set up the adapter's IP address, or the PC's IP address can be changed directly.

Q: The B-400 adapter cannot communicate with the Wireless Access Point. How do I solve the problem?

A: Please follow the procedures below:

- Check if the Wireless Navigator utility is available to access the B-400 first. If not, please go through the procedure of Q1.
- Check if the adapter is set to Infrastructure correctly.
- Check if the SSID of your adapter is the same as AP's. If not, please set it to the same SSID as the access point.
- Check if WEP is enabled either in the B-400 adapter or at the access point. If yes, please make sure that the adapter and the Wireless Access Point both have the same WEP settings,

ZyAIR B-400 Quick Installation Guide

since the keys must match.

- Finally, please check if radio interference is causing a problem; see if connection is possible when close to the Wireless Access Point. The connection range can be as short as 100 feet in a poor environment.

Q: The Wireless connection speed is very slow. How can I improve it?

A: The wireless system will connect at the highest possible speed, depending on the distance and environment conditions. To obtain the highest possible connection speed, try to adjust the location of the B-400, and its antenna's direction. If interference is the problem, changing to another channel (1, 6 or 11) may improve the signal.

Q : How do I access the ZyAIR B-400 if I am using a MAC or Linux PC, or if I do not have the Wireless Navigator?

A: The default IP of the ZyAIR B-400 is 192.168.1.11. The web configurator can be accessed through the web browser directly.

(Note: The host's IP must be first configured to the same subnet as the ZyAIR B-400).