

P-660HW-D

802.11g Wireless ADSL 2+ 4-port Gateway

Quick Start Guide

Version 3.40
3/2006
Edition 1

The logo for ZyXEL, featuring the word "ZyXEL" in a bold, blue, sans-serif font. The "y" is lowercase and has a distinctive shape, while "XEL" is uppercase. The letters are closely spaced and have a slight shadow effect.

Overview

The P-660HW-D is an ADSL router with a four-port built-in switch and IEEE 802.11b/g wireless capability.

See your User's Guide for background information on all features.

How to use the included CD

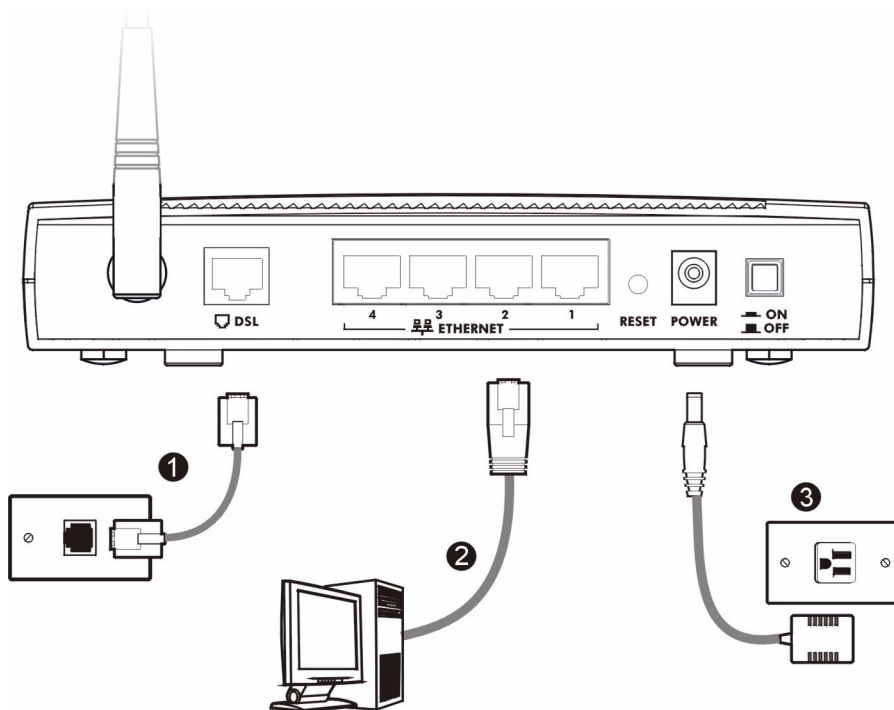
This CD provides multi-media animations that help you set up your P-660HW-D.

1 On the included CD, click **Multimedia Auto Provisioner > Installation Tutorial**.

2 At the end of the tutorial, click **Configuration Genie**.

1 Hardware Connections

If you prefer to see a multi-media animation of how to make hardware connections, see the installation tutorial on the included CD.



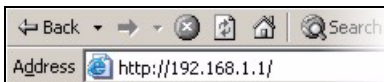
1 **DSL**: Use a telephone wire to connect your P-660HW-D's **DSL** port to a telephone jack (or to a splitter, if one is already installed).

- 2 ETHERNET:** Use an Ethernet cable to connect a computer to the **ETHERNET** port for initial configuration and/or Internet access.
- 3 POWER:** Use the power adaptor provided with your P-660HW-D to connect an appropriate power source to the **POWER** socket. Make sure the power source is on.
- 4** Push in the **POWER** button. Look at the lights on the front panel.
 - The **POWER** light and the **DSL** light blink while your P-660HW-D starts up and stay on once the DSL connection is ready. The **INTERNET** light is on when you are able to access the Internet and blinks when the P-660HW-D is sending or receiving data.
 - Each **ETHERNET** light stays on if the corresponding **ETHERNET** port is properly connected and blinks when there is traffic.

If any of these lights are not on, check your connections, and inspect your cables for damage. If the lights are still off, contact your local vendor.

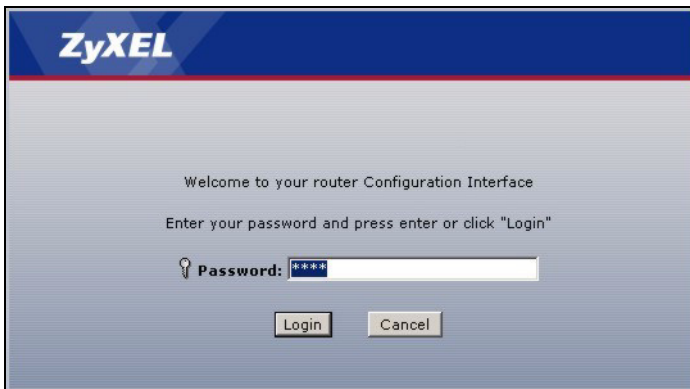
2 Status Page

- 1** In your browser, go to <http://192.168.1.1>.



- 2** Enter the default password **user** to go directly to the **Status** screen.

If your browser cannot find this screen, check its security settings. See **Troubleshooting** for details.



3 See the User's Guide for field descriptions of the **Status** screen.

The screenshot shows the ZyXEL P-660HW-D1 Status screen. The interface is divided into several sections:

- Device Information:**
 - Host Name: P-660HW-D1
 - Model Number: P-660HW-D1
 - MAC Address: 00:13:49:02:49:90
 - ZyNOS Firmware Version: V3.40(AGL.0)b5 | 03/09/2006
 - WAN Information:
 - DSL Mode: NORMAL
 - IP Address: 0.0.0.0
 - IP Subnet Mask: 0.0.0.0
 - Default Gateway: 0.0.0.0
 - VPI/VCI: 8/35
 - LAN Information:
 - IP Address: 192.168.1.1
 - IP Subnet Mask: 255.255.255.0
 - DHCP: Server
 - WLAN Information:
 - SSID: ZyXEL
 - Channel: 6
 - WEP: Disable
- System Status:**
 - System Uptime: 0:51:50
 - Current Date/Time: 01/01/2000 02:06:30
 - System Mode: Routing / Bridging
 - CPU Usage: 3.07%
 - Memory Usage: 68%
- Interface Status:**

Interface	Status	Rate
DSL	Down	0 kbps / 0 kbps
LAN	Up	100M/Full Duplex/Active
WLAN	Active	54M

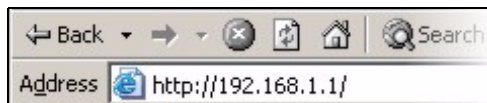
3 Internet and Wireless Setup

1 Open your web browser, and go to <http://www.zyxel.com>.

Your P-660HW-D tries to detect your Internet connection. Wait for the P-660HW-D to finish detection. If any other screens appear, follow the directions in the screen.

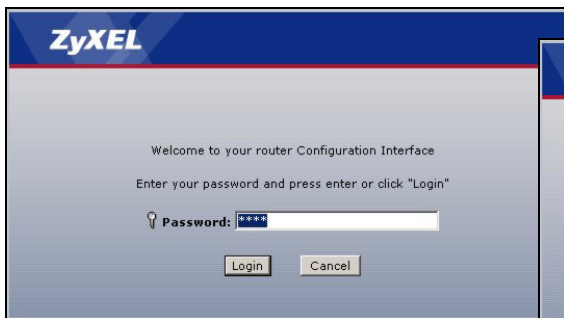
If the web page opens correctly, your P-660HW-D is ready for you to use. If the web page does not open, follow the rest of the steps. You should have the information provided by your ISP.

2 In your browser, go to <http://192.168.1.1>.



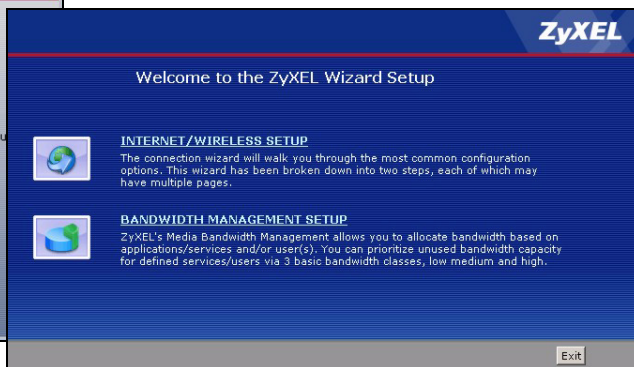
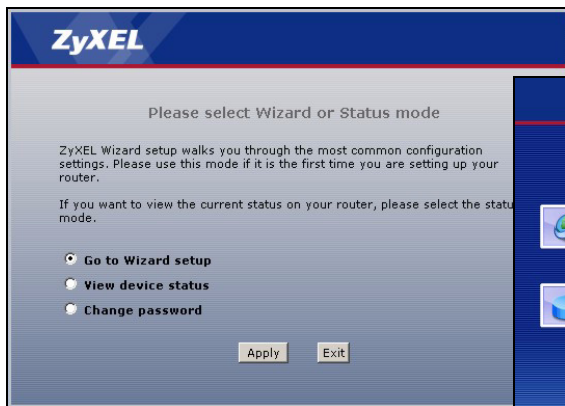
3 Enter the admin password **1234** to set up your internet and wireless connections and security settings. Click **Login**. If your browser cannot find the login screen, check its security settings. See **Troubleshooting** for details.

4 Follow the directions in the screens.



5 Click **Go to Wizard setup**. Then, click **Apply**.

6 Click **INTERNET/WIRELESS SETUP**. Wait while your P-660HW-D tries to detect your DSL connection.



7 Follow the directions in the wizard. Do not change default settings if your ISP did not provide information.

OTIST

ZyXEL's One-Touch Intelligent Security Technology (OTIST) feature allows you to automatically configure the SSID and WPA-PSK on all OTIST-equipped wireless clients within range of the P-660HW-D.

Note: If you enable OTIST but select **Disable wireless security** using the wireless wizard, the P-660HW-D will create a WPA-PSK automatically.

If you enable OTIST and select **Manually assign a WEP key** using the wireless wizard, the P-660HW-D will replace the WEP key with a WPA-PSK.

Enable OTIST only if your wireless clients support WPA and OTIST.

You must enable OTIST on the P-660HW-D and all wireless clients within three minutes in any order.

To enable OTIST on the P-660HW-D, you can either use the wizard (see [Section 3 on page 4](#)) or hold in the **RESET** button (see [Section 1 on page 2](#)) for one to five seconds. Do not hold the **RESET** button in for too long, as this will reset the P-660HW-D to the factory defaults.

To enable OTIST on wireless clients, click **Start** in the **Adapter** screen. The **Setup Key** is 01234567 by default. If you have previously saved a setup key on the P-660HW-D, use it instead of the default.

For more information, see **Wireless LAN** in the User's Guide.

Troubleshooting

- 1 If you cannot access the web configurator using Internet Explorer in Windows XP or Windows Server 2003, make sure you allow pop-up windows, JavaScripts and Java permissions or set the Internet security level lower than **High** in Internet Explorer (in Internet Explorer, click **Tools > Internet Options > Security > Custom Level...**). See the appendix in the User's Guide for more information.
- 2 If you cannot access the Internet when your computer is connected to the **ETHERNET** port, follow these steps.
 - A) Check the lights on the front panel. If they are different than what is described in section 1, make sure the connections are correct. (See section 1.) If the lights are still different, turn off the device, wait a few seconds, and turn it on again.
 - B) Follow the steps in section 3 again. Make sure you enter the correct information. For example, if your account has a user name and password, make sure you type it correctly. In addition, if you are not sure which encapsulation your ISP uses, contact your ISP.
 - C) If you are using a new Internet account, contact your ISP to make sure it is active.
 - D) If you still have problems, see **Troubleshooting** in the User's Guide.
- 3 If you cannot access the Internet using the wireless network, follow these steps.
 - A) On a computer in the wireless network, open your browser, and go to <http://192.168.1.1>. If you see the screen in step 3 of section 3, follow suggestions A - D above. If you do not, go to the next step.
 - B) Make sure your P-660HW-D and your computer are using the same wireless and wireless security settings. Follow the steps in section 2.

Viewing Your Product's Certifications

- 1 Go to www.zyxel.com.
- 2 Select your product from the drop-down list box on the ZyXEL home page to go to that product's page.
- 3 Select the certification you wish to view from this page.