

ZyXEL



Robust, Ultra High-speed ADSL2+ Security Gateway for SOHO Networks

- **ADSL2/2+ READSL Support**
- **Firewall and IPSecVPN Security**
- **Network Anti-Virus Scan Engine Ready**
- **Auto Fail-over and Fall-back WAN Backup**

Benefits

Advanced ADSL2+ High-Speed Internet Access

The P-662H/HW-D Series is compatible with high-speed ADSL, ADSL2 and ADSL2+ interfaces over existing copper lines. With speeds of up to 12Mbps (ADSL2) or 24Mbps (ADSL2+), the P-662H/HW-D series offers higher data transfer rates and better bandwidth than traditional ADSL gateways. It also supports RE ADSL (Reach Extended ADSL) for higher speed and longer distance. For Wireless model is empowered by ZyXEL Wireless g+ SuperSpeed Technology, the P-662HW-D Series delivers the higher wireless transmission rate that makes extending wired network with efficiency and mobility.

Robust Firewall Security and IPSec VPN

The ICSA-certified ZyNOS operating system ensures state-of-art firewall performance and robust security on the P-662H/HW-D Series. Based on Stateful Packet Inspection, DoS (Denial of Service) and DDoS features, it provides the first line of defense against hackers, network intruders, and other malicious threats. Furthermore, its VPN feature supports data encryption over the Internet to ensure secure data transmission between two sites, and replaces expensive leased lines, allowing global interconnectivity with minimal expense.

Network-based Anti-Virus

The Anti-Virus scan engine inside the P-662H/HW-D Series provides users with a deeper range of network security. It detects and eliminates virus and worm attacks from the entry points of a network by scanning each incoming and outgoing e-mail (SMTP/POP3), as well as traffic from the Web (HTTP) and File transfer (FTP). Base on automatic signature updates, it provides real time network protection against viruses and protects clients that are not already equipped with Anti-Virus technology.

Auto Fail-over and Fall-back WAN Backup Solution

The P-662H/HW-D Series features a Fail-over and Fail-back WAN Backup Solution for complete reliability. When the DSL connection fails, traffic is forwarded to either a backup ISDN or analog modem to maintain data transfer. When the DSL connection is re-established, traffic is fully restored. The P-662H/HW-D Series also performs backup functions by redirecting traffic to a specific gateway to ensure availability of the Internet. The WAN Backup Solution saves device maintenance cost and reduces loss from daily operation.



ADSL2+ 4-port Security Gateway

P-662H/HW-D
SERIES



ROUTER

Specifications

ADSL

- Support Multi-Mode standard (ANSI T1.413, Issue 2; G.dmt (G.992.1); G.lite (G992.2))
- EOC specified in ITU-T G.992.1
- ADSL2 G.dmt.bis (G.992.3)
- ADSL2 G.lite.bis (G.992.4)
- ADSL2+ (G.992.5)
- Reach-Extended ADSL (RE ADSL)

Router

- IEEE 802.1d Transparent Bridging
- IP Routing: TCP, UDP, ICMP, ARP
- RIP1v1 and RIPv2
- IP Multicast IGMP v1/v2

IP Management

- SUA/Multi-NAT Internet Sharing
- Multimedia Support
- DHCP Server/Relay/Client
- DNS Proxy
- Dynamic DNS
- UPnP Support

Network Management

- Web based Configuration
- Command-line Interpreter (CLI)
- Telnet Remote Management
- SNMP Support
- FTP/TFTP firmware upgrade and configuration backup/restore
- Built-in Diagnostic Tool

Wireless

(For P-662HW-D series only)

- 802.11g Compliance
- 802.11g+ support
- Wired Equivalent Privacy (WEP) Data Encryption 64/128b/256 bit
- Dynamic WEP Key
- MAC Address filter

- WPA, WPA-PSK/TKIP, WPA2
- Support IEEE 802.1x

Firewall Security

- Stateful packet Inspection
- Prevent DoS, DDoS
- DMZ for public server
- Keyword blocking

Virtual Private Network

- 20 IPSec VPN tunnels
- AES
- NETBIOS pass-through for IPSec
- IPSec VPN keep-alive
- IPSec NAT Traversal
- IPSec PKI

Anti-Virus

- Port Scanning for HTTP, POP3/SMTP, FTP protocols
- Automatically signature file download to provide real time protection
- Protect non-pc devices

Other Features

- Zero configuration
- Traffic Redirect
- Dial backup
- Support IGMP proxy
- Multilingual Web Configurator
- CNM support
- TR-069 compliance
- Media Bandwidth Management (MBM)
- Content Access Control
- OTIST

Hardware

- ADSL: One RJ-11 or RJ-45 Port
- LAN: 4-Port Switch, 10/100M Auto MDI/MDIX
- Antenna: 5dBi detachable antenna 1
- Console/AUX: RJ45 Port

- CON/AUX Switch
- Reset Button
- Status LEDs Indicator
- Power: 12V AC

Physical Specifications

- Dimensions: 180 (W) x 128 (D) x 36 (H) mm
- Net Weight: 360 g

Environmental Specifications

- Operation Environment
 - Temperature: 0°C ~ 40°C
 - Humidity: 20% ~ 85% (non condensing)
- Storage Environment
 - Temperature: -20°C ~ 60°C
 - Humidity: 10% ~ 90% (non condensing)

Certifications and Warranty

- Certifications: FCC, CE
- Warranty: Two years

**When the Wireless g+ SuperSpeed technology is enabled, the theoretical data rate can reach up to 125Mbps among Wireless g+ SuperSpeed-enabled access points and clients. Actual performance may vary depending on different operating environments.*

Product Description

P-662H-D1

ADSL2+ 4-port Security Gateway over POTS

P-662H-D3

ADSL2+ 4-port Security Gateway over ISDN

P-662H-D7

ADSL2+ 4-port Security Gateway over U-R2

P-662HW-D1

802.11g Wireless ADSL2+ 4-port Security Gateway over POTS

P-662HW-D3

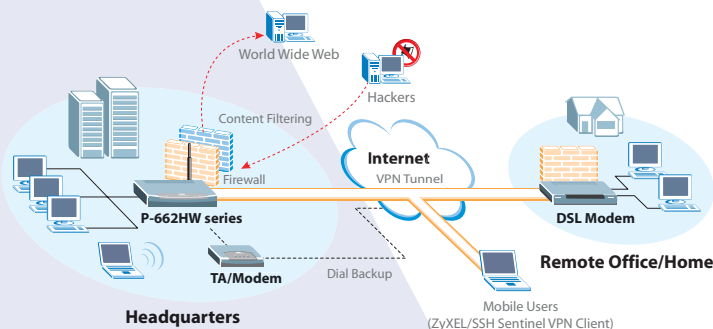
802.11g Wireless ADSL2+ 4-port Security Gateway over ISDN

P-662HW-D7

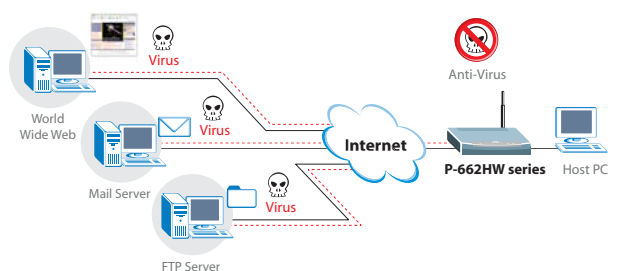
802.11g Wireless ADSL2+ 4-port Security Gateway over U-R2

Application Diagram

■ Firewall/VPN Application



■ Anti-Virus Application



For more product information, visit us on the web www.ZyXEL.com

Corporate Headquarters
ZyXEL Communications Corp.
 Tel: +886-3-578-3942
 Fax: +886-3-578-2439
 Email: sales@zyxel.com.tw
<http://www.zyxel.com>
<http://www.zyxel.com.tw>

ZyXEL Denmark A/S
 Tel: +45 39 55 07 00
 Fax: +45 39 55 07 07
 Email: info@zyxel.dk
<http://www.zyxel.dk>

ZyXEL France SARL
 Tel: +33 (0)4 72 52 97 97
 Fax: +33 (0)4 72 52 19 20
 Email: info@zyxel.fr
<http://www.zyxel.fr>

ZyXEL Hungary
 Tel: +36-1-336-1646
 Fax: +36-1-325-9100
 Email: info@zyxel.hu
<http://www.zyxel.hu>

ZyXEL North America
 Tel: +1-714-632-0882
 Fax: +1-714-632-0858
 Email: sales@zyxel.com
<http://www.us.zyxel.com>

ZyXEL Poland
 Tel: +48 (22) 333 8250
 Fax: +48 (22) 333 8251
 Email: info@pl.zyxel.com
<http://www.pl.zyxel.com>

ZyXEL Spain
 Tel: +34 902 195 420
 Fax: +34 913 005 345
 Email: sales@zyxel.es
<http://www.zyxel.es>

ZyXEL UK Ltd.
 Tel: +44 (0) 1344 303044
 Fax: +44 (0) 1344 303034
 Email: sales@zyxel.co.uk
<http://www.zyxel.co.uk>

ZyXEL Czech s.r.o.
 Tel: +420 241 091 350
 Fax: +420 241 091 359
 Email: info@zyxel.cz
<http://www.zyxel.cz>

ZyXEL Finland Oy
 Tel: +358-9-4780 8400
 Fax: +358-9-4780 8448
 Email: sales@zyxel.fi
<http://www.zyxel.fi>

ZyXEL Germany GmbH.
 Tel: +49 (0) 2405-6909 0
 Fax: +49 (0) 2405-6909 99
 Email: sales@zyxel.de
<http://www.zyxel.de>

ZyXEL Kazakhstan
 Tel: +7-327-2-590-699
 Fax: +7-327-2-590-689
 Email: sales@zyxel.kz
<http://www.zyxel.kz>

ZyXEL Norway A/S
 Tel: +47 22 80 61 80
 Fax: +47 22 80 61 81
 Email: sales@zyxel.no
<http://www.zyxel.no>

ZyXEL Russia
 Tel: +7 (095) 542-8920
 Fax: +7 (095) 542-8925
 Email: info@zyxel.ru
<http://www.zyxel.ru>

ZyXEL Sweden A/S
 Tel: +46 (0) 31 744 77 00
 Fax: +46 (0) 31 744 77 01
 Email: sales@zyxel.se
<http://www.zyxel.se>

ZyXEL Ukraine
 Tel: +380 44 494 49 31
 Fax: +380 44 494 49 32
 Email: sales@ua.zyxel.com
<http://www.ua.zyxel.com>